

Public Talk Katong School

9 September 2022





PROGRAMME

**Welcome and Introduction to
APSN Katong School**

Katong School Programmes

Admission Process for SPED Schools

**Virtual School Tour
Questions & Answers**



Established in 1976, as a social service agency providing special education

Mission

- **Enabling People with Special Needs to be Active Contributors of Society**
- **Inspiring and Building Capabilities of Partners in the community**
- **Leading and Advocating towards an Inclusive Society**

Vision

- **Empowered Lives for an Engaged Community and Inclusive Society**

Values

- **Respect, Resilience, Commitment, Integrity**



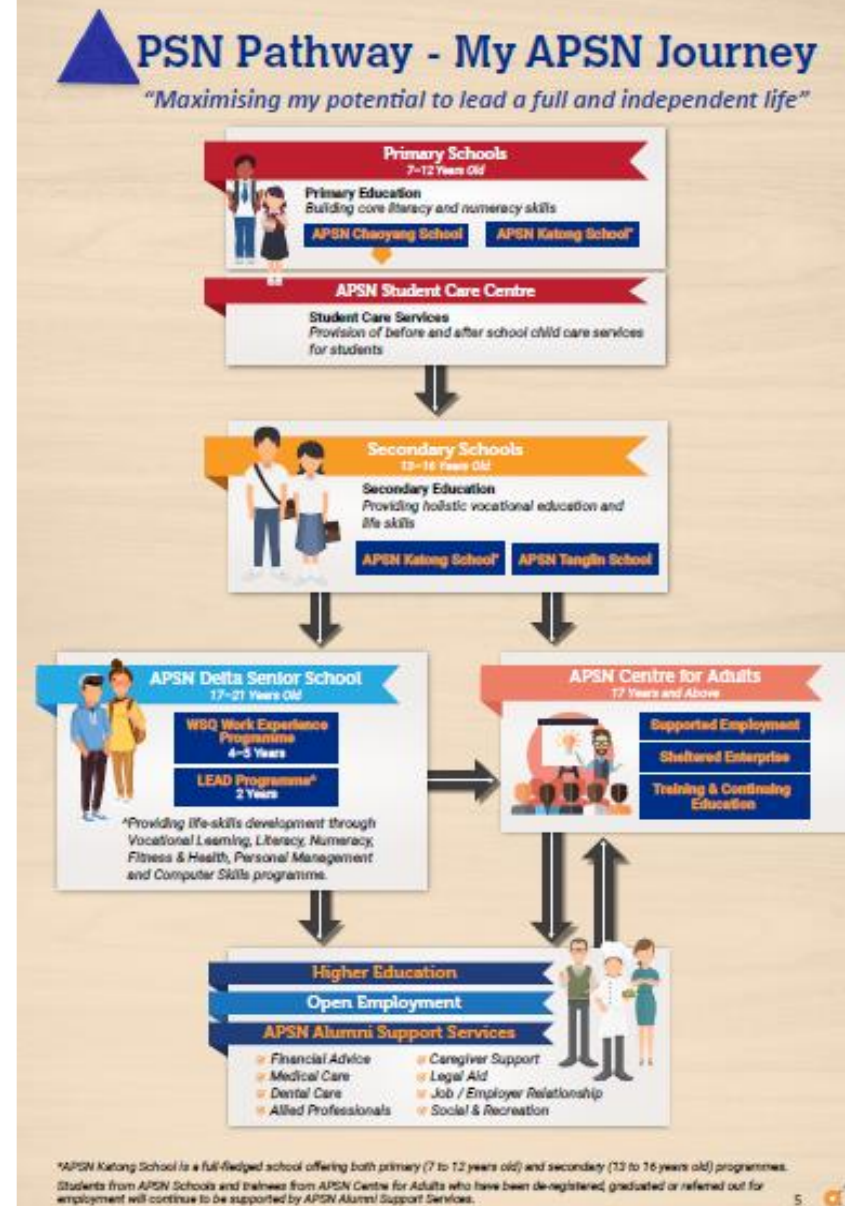
APSN Education Services Ltd.

Students of APSN

- ❑ Persons with Mild Intellectual Disability (MID), IQ 50 – 70
- ❑ Ages: 7 years old to adults

4 SPED schools

- ❑ Chaoyang School (Pri)
- ❑ Katong School (Pri and Sec)
- ❑ Tanglin School (Sec)
- ❑ Delta Senior School (post-Sec)





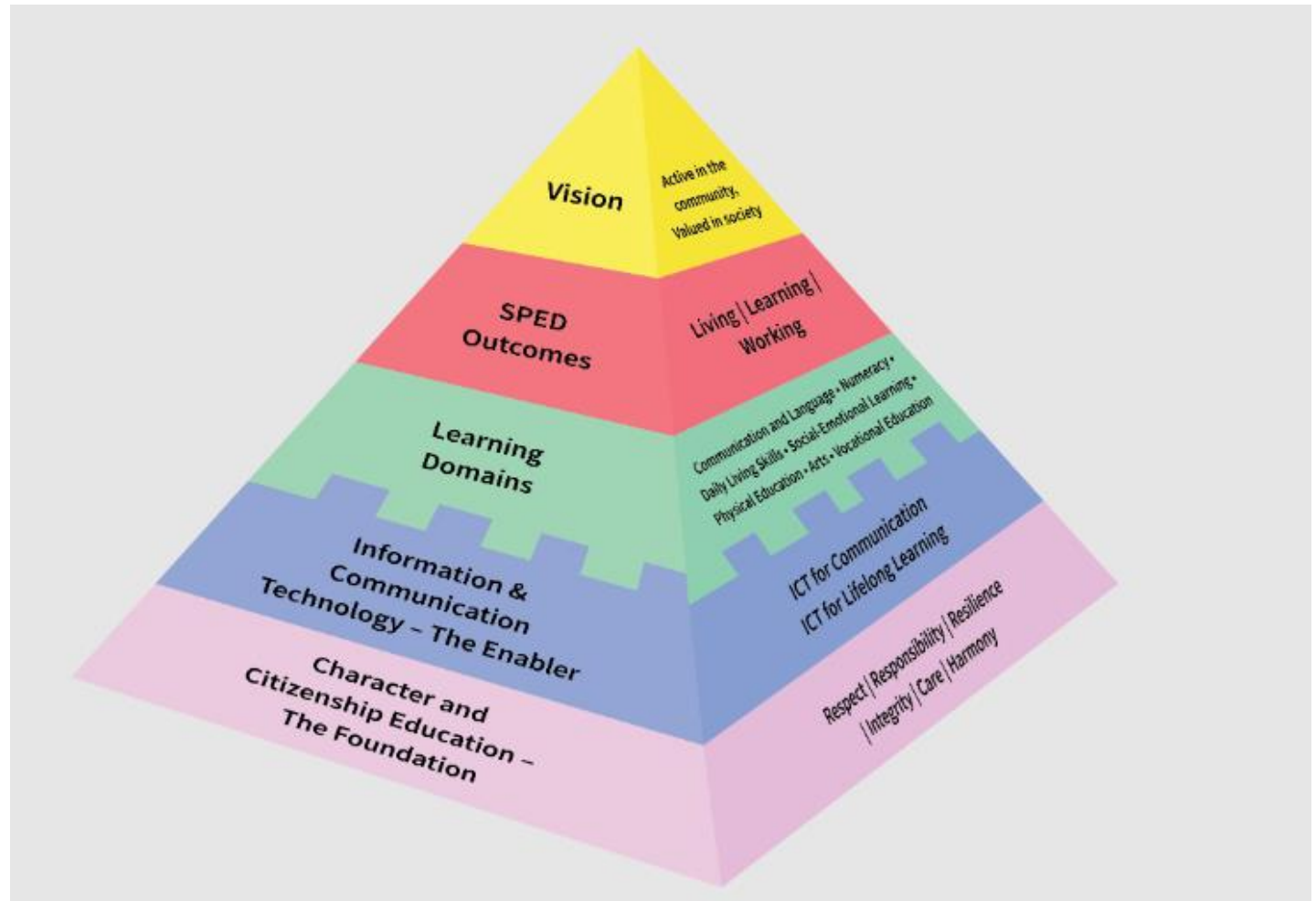
KATONG SCHOOL

- One of 21 Special Education schools in Singapore supported by NCSS and MOE
- Established since 1976 as a primary and secondary school within APSN
- Offers programmes for
 - Primary (7-12 years old) and
 - Secondary (13-16 years old)

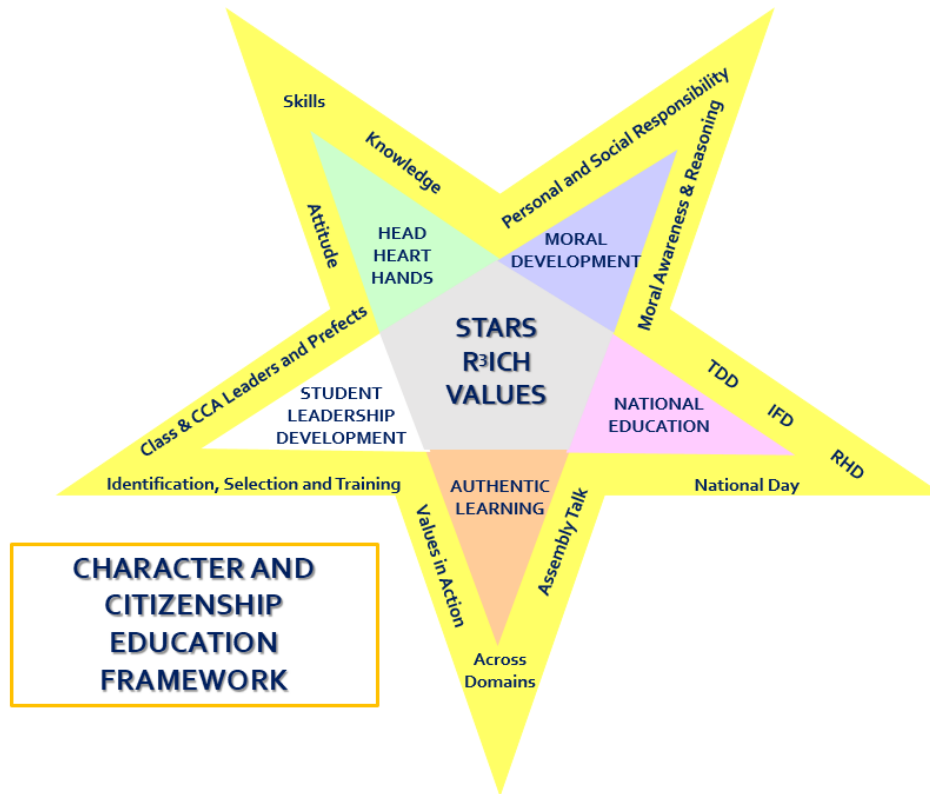
SCHOOL INFORMATION

	Secondary AM session	Primary PM session
School Hours	7. 45 am to 1 pm (Mon & Tues) 7. 45 am to 12.30 pm (Wed and Thurs) 7. 45 am to 11.30 am (Fri)	12.30 pm to 5.15 pm (Mon & Tues) 12.30 pm to 5 pm (Wed & Thurs) 1 pm to 5 pm (Fri)
Recess	9.30 am to 10 am	2 pm to 2.30 pm
	10 am to 10.30 am	2.30 pm to 3 pm
No. Students	146	138
	284	
Staff Strength	91 Teaching Staff, Allied Professionals, Trainers/Instructors, Admin, Support Staff	

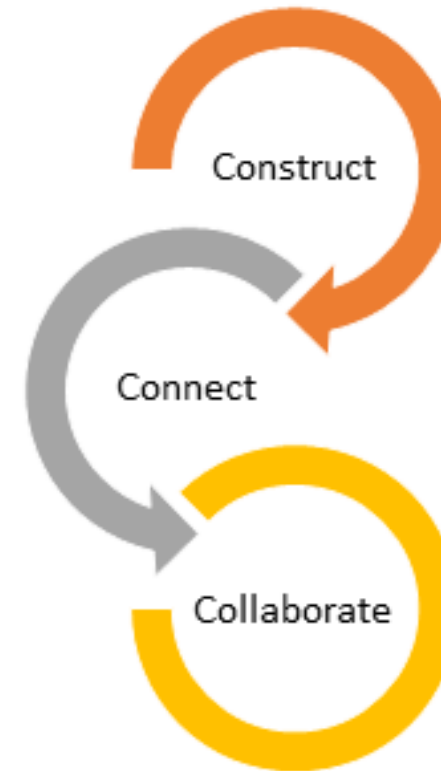
SPED CURRICULUM FRAMEWORK



CHARACTER AND CITIZENSHIP EDUCATION AS THE FOUNDATION



ICT as an enabler to:



PEDAGOGICAL APPROACH

Provide multiple means of
Engagement

Affective Networks
The "WHY" of Learning




Provide multiple means of
Representation

Recognition Networks
The "WHAT" of Learning



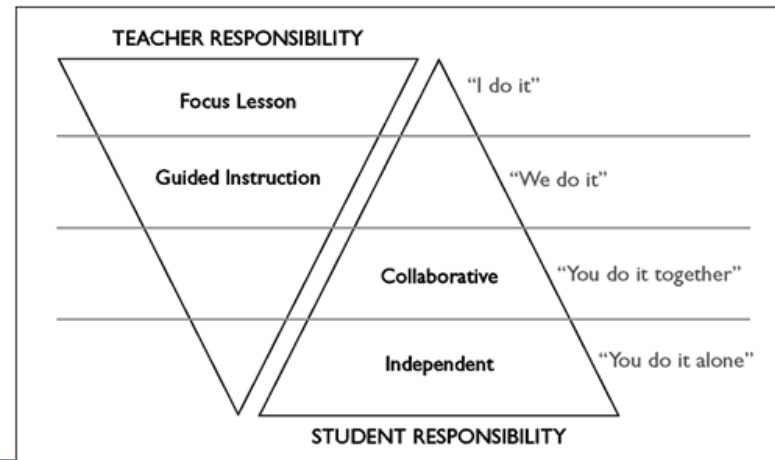
Provide multiple means of
Action & Expression

Strategic Networks
The "HOW" of Learning

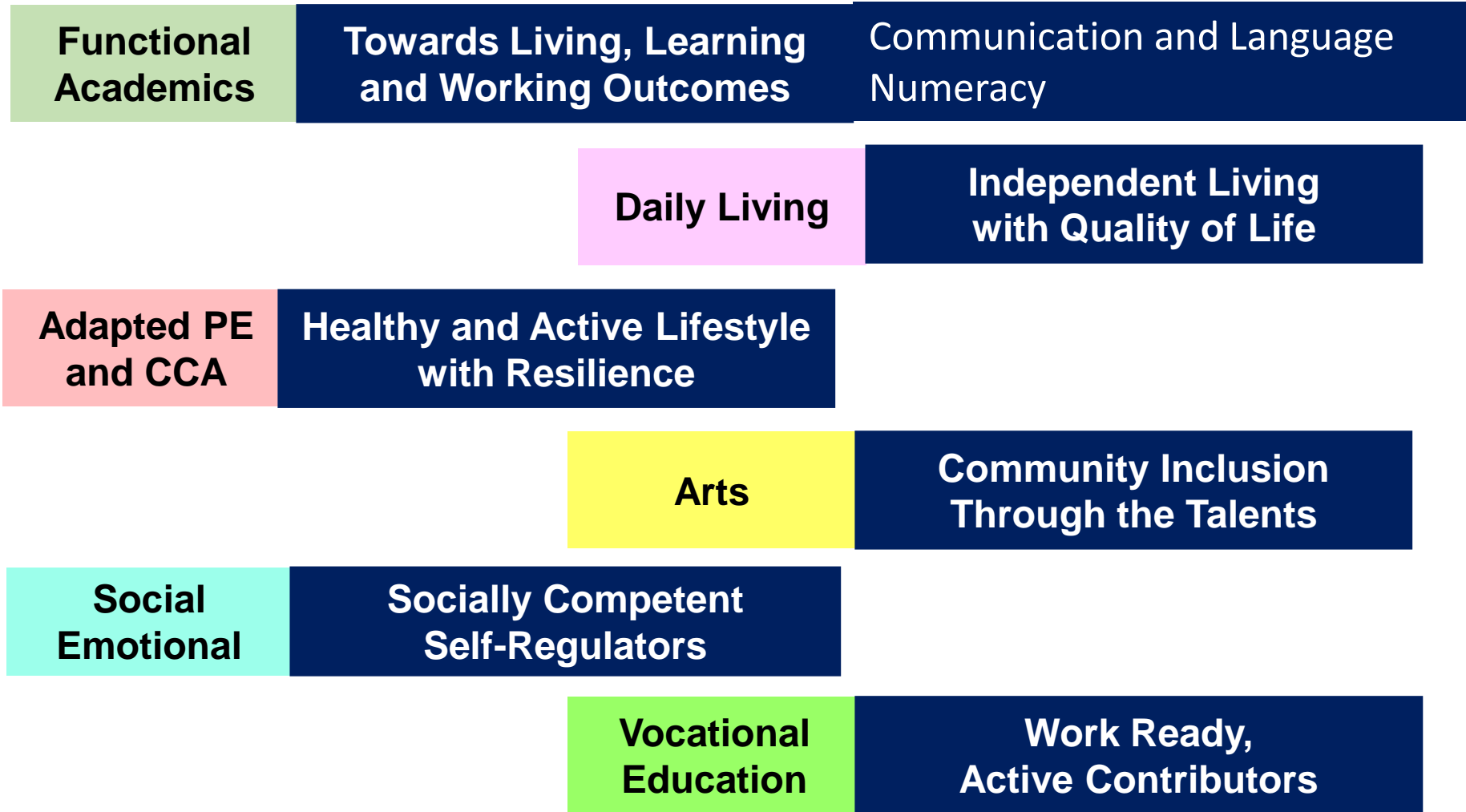


**Universal Design for Learning
(UDL)**
Remove barriers to learning

**Gradual Release of
Responsibility
(GRR)**



LEARNING DOMAINS



FUNCTIONAL LANGUAGE AND COMMUNICATIONS

Avid Reader, Confident Communicator & Expressive Writer



Pri – Reading and Listening Comprehension

1. Reading Mastery

- Phonics
- Shared Book Approach

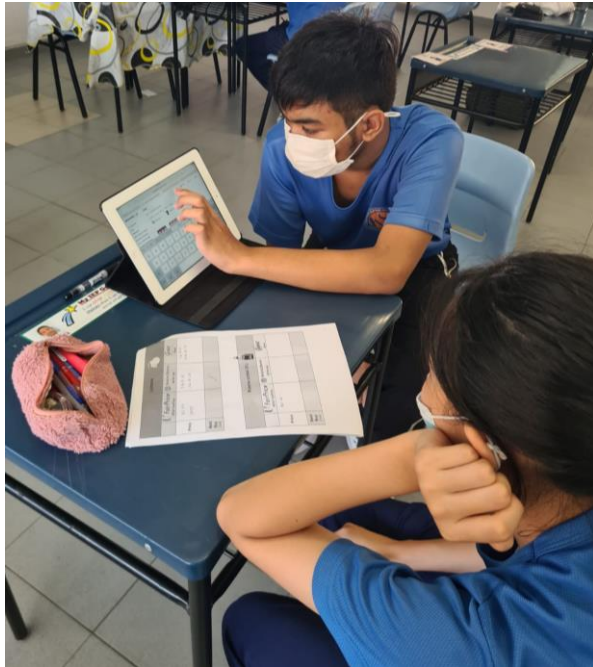
2. Collaboration with NLB

- Sensory story-telling sessions
- read@community membership
- E-Reads Kiosk

FUNCTIONAL LANGUAGE AND COMMUNICATIONS

Avid Reader, Confident Communicator & Expressive Writer

Leveraging on ICT
to access various text types



Sec – Functional Texts

Oral and Written Expression

Thirstea Café
Integration of
learning domains

FUNCTIONAL NUMERACY

Problem Solver and Logical Thinker who can make Meaningful Connections in the daily experiences

Counting & Computation,
Measurement,
Budgeting,
Scheduling



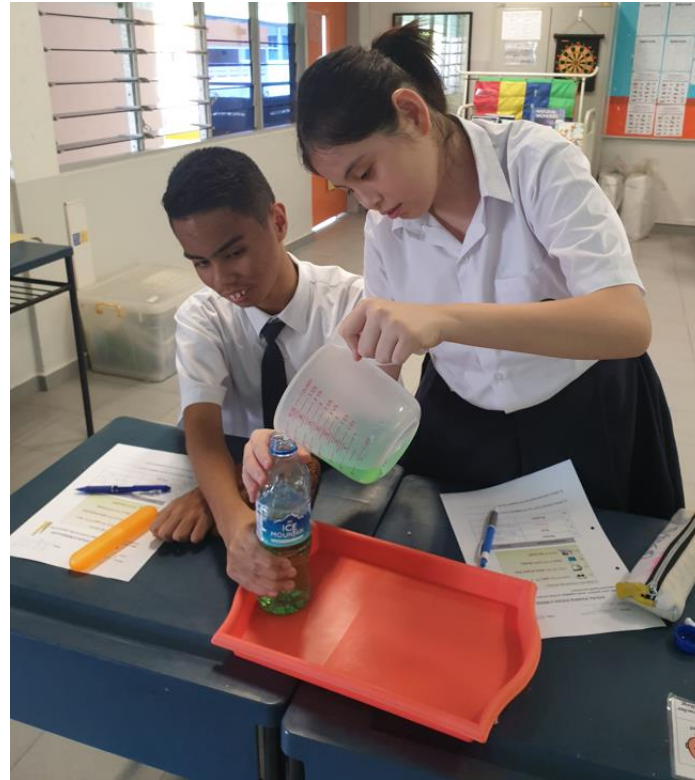
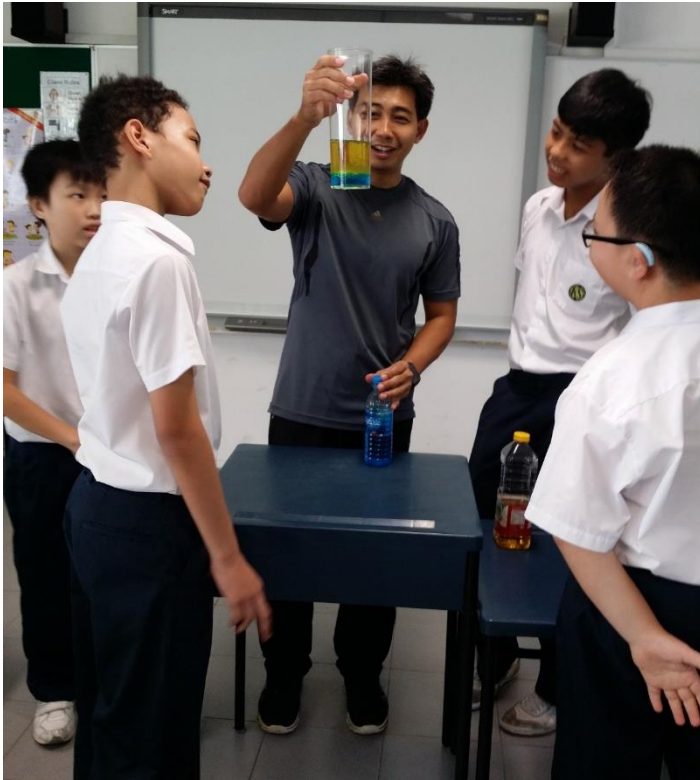
**Use of manipulatives
Making sense of multiplication 2x3**

Authentic Learning Experiences



FUNCTIONAL SCIENCE

Explorer with Flexibility to Respond to
and Understand the environment



Exploring
Things
Around Us

ADAPTIVE PHYSICAL EDUCATION & CCA

Healthy and Active Lifestyle with Resilience



Psychomotor and Multi-sensory Experiences

ADAPTIVE PHYSICAL EDUCATION & CCA

Healthy and Active Lifestyle with Resilience



8-week swimming program

- Build water confidence and awareness of water safety
- Competency in accessing and using community facilities
- Engage in healthy recreational activities



Badminton, Soccer, Basketball, Goalball

CCA (SECONDARY)

SPORTS

- Swimming
- Athletics
- Soccer
- Bowling



Bowling

ARTS

- Circus Arts
- Dance
- Choir
- KS Arts Biz



Circus Arts

CLUB

- Digital Art and Photography
- Robotics

UNIFORMED GROUP

- Scouts



Scouts

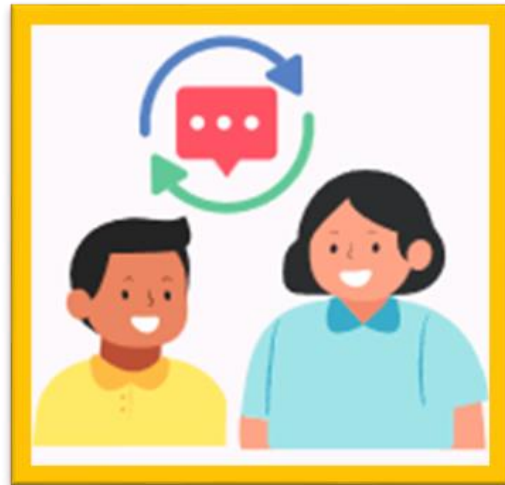
* *Modular CCA at Primary level*

AESTHETICS- Performing and Visual Arts

Active in the Community, Valued in the Society



Exploration



Engagement



Creativity



Collaboration

AESTHETICS- Performing and Visual Arts

Performing and Visual Arts Highlights



SOCIAL EMOTIONAL

Socially Competent Self Regulators

3-PRONG SENSORY EXPERIENCE



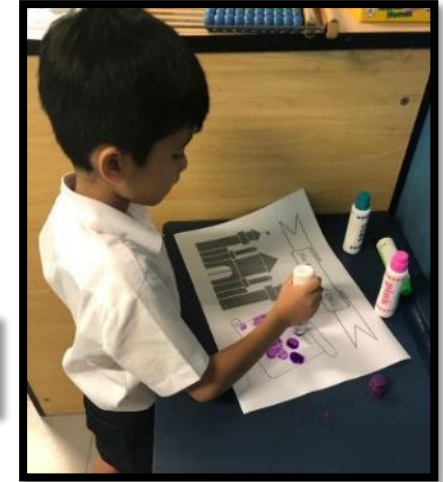
Sensory Regulation Sessions

- In OT room **daily** for **15 to 30 mins**
- **Non-structured** for students to regulate themselves by **seeking** or **avoiding** specific sensory input
- **Choice** of a **range** of vestibular, proprioceptive, tactile, auditory and visual activities



Sensory Play Lessons

- **1 hour every week** in **classroom** or **outdoor**
- **Structured** activities designed for regulation
- **Differentiated** lesson plans for diverse learners



Sensory Breaks

- **5-10 mins** of breaks in between lessons
- **Planned sensory-motor activities** based on Sensory Profile Assessment
- Provided students with **meaningful** and **structured rest time**
- Helped in smooth **transition**

SOCIAL EMOTIONAL

Socially Competent Self Regulators



Activities for building emotional awareness



Creating their own calming
'Rainbow and I Spy' bottles

DAILY LIVING

Independent Living with Quality of Life



Experiential Learning



VOCATIONAL EDUCATION

Work-ready Active Contributors



Ergonomics (Sec 1)



Horticulture (Sec 2)



Hospitality (Sec 3)

VOCATIONAL EDUCATION

Work-ready Active Contributors



Retail Operations (Sec 4)



Food & Beverage

VOCATIONAL EDUCATION

Work-ready Active Contributors

WORK EXPERIENCE PROGRAMME (WEP)



Work Exposure Programme (Sec 1)

Students visit work sites to get familiar with the concept of work



Examples

- DHL
- Airport
- Orchid Laundry
- Emergency Services

VOCATIONAL EDUCATION

Work-ready Active Contributors

WORK EXPERIENCE PROGRAMME (WEP)



Work Attachment Programme (Sec 4)

Students are attached to companies to perform actual work and interact with employees

Examples

- Istana
- LiHo
- Greenology
- Da Vinci Group
- National Library Board

INDIVIDUAL TRANSITION PLANNING



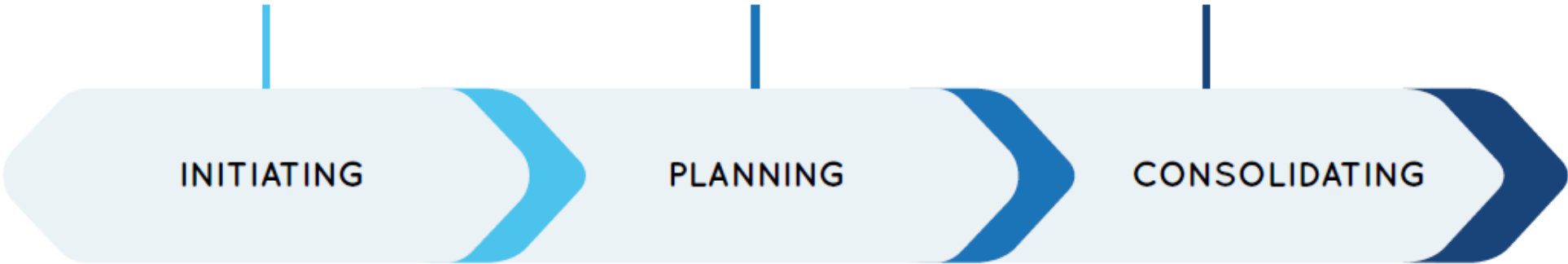
13-14 YEARS



15-16 YEARS



17-18 YEARS



ALLIED PROFESSIONALS



Psychologist

- Pre-enrolment screening
- Admissions & Referral (A&R)
- Emotional & behaviour management
- Public & parent education

Occupational Therapist

- Gross & Fine motor skills
- Handwriting
- Posture/ co-ordinated movement
- Visual perceptual
- Sensory processing & regulation
- Attention

Social Worker

- Psychosocial issues
- Counselling
- Healthy safe relationships
- Financial assessment
- Home support
- Referrals
- Public & parent education

Speech and Language Therapist

- Speech (Articulation)
- Social communications
- Auditory processing
- Receptive & expressive language
- Oro-motor

ALLIED PROFESSIONALS

INTERVENTION



Individual Therapy

Pull out session
30-45 mins per session



Group/ Level Programme

Work readiness
Play skills
Buddy-In
Transition
Healthy Safe Relationships



Curriculum Based Programme

Ergonomics
Sensory play
Fine motor skills
Modified PE (Primary)
Daily living skills

Katong School Tour Video

T
H
A
N
K

Y

U

