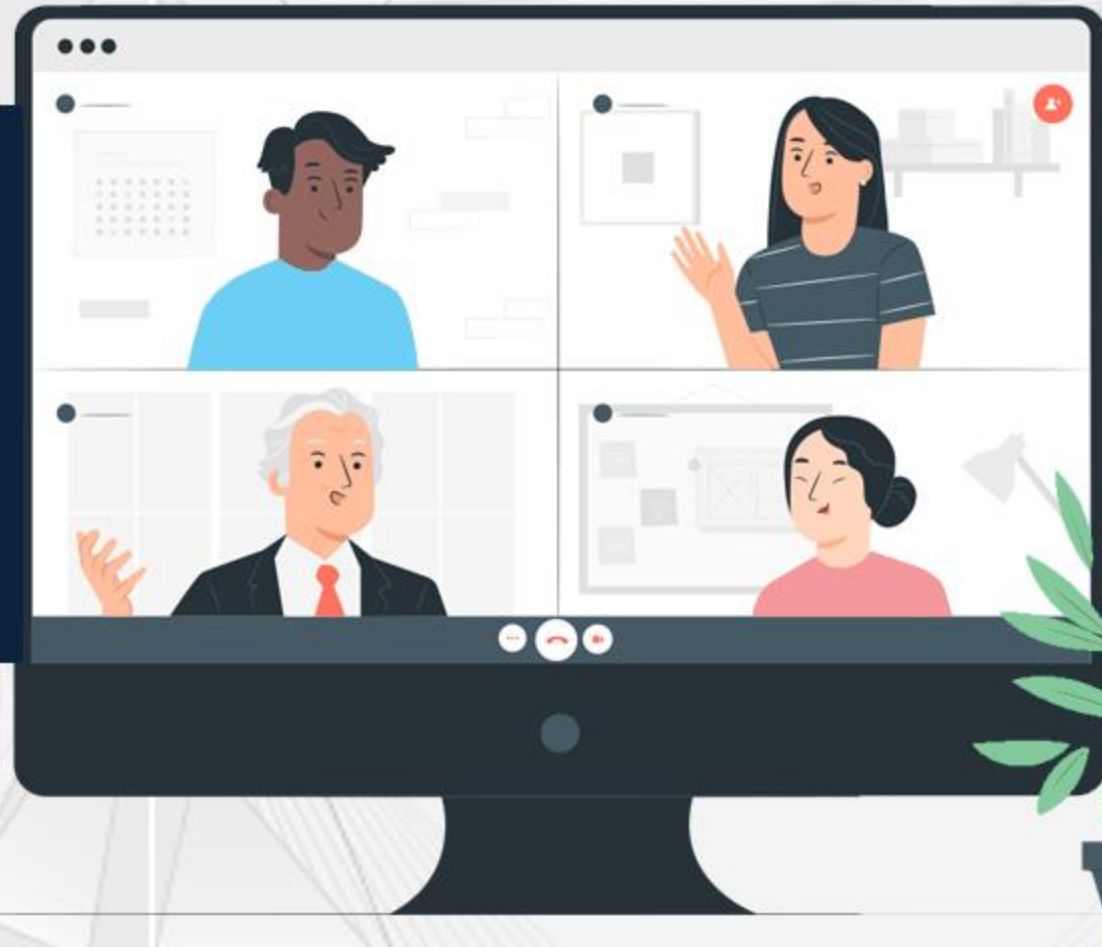


SINGAPORE

Student Learning Space



How to Add Fill-in-the-Blanks

How to Add Fill-in-the-Blanks

1

After login into your SLS account, click 'Create New Lesson or Course'

The screenshot shows the Student Learning Space dashboard. At the top, it says "Welcome back, Ms Farhanna Zin!". Below this, there are three main buttons: "Create New Lesson or Course" (blue), "Community Gallery" (teal), and "Create New Announcement" (yellow). The "Create New Lesson or Course" button is circled in red, and a red arrow points to it from the bottom right. Below these buttons are two smaller buttons: "Class Groups" and "Assignments".

Choose Lesson or Course

Choose Lesson or Course

**Lesson**

A Lesson can contain up to 20 Activities/Quizzes.

 CHOOSE**Course**

A Course can contain up to 20 Sections. Each Section can have up to 20 Activities/Quizzes. Sections may have individual start and due dates.

 CHOOSE**2**

Choose 'Lesson'

How to Add Fill-in-the-Blanks

Choose Lesson or Course / Choose Lesson

Custom



Custom

Build a customised lesson

CHOOSE

3

Choose 'Custom'

4

This is your Introduction Page.
Enter your 'Lesson Title'

Lesson Title

English Grammar

Featured Image

Please refer to the list of acceptable file types and sizes [here](#).

+ ADD EXISTING ▾

Upload 'Featured Image'
related to your lesson



Upload or drag and drop file here

Lesson Description

↶ ↷ B I A ▾ ▾ ≡ ▾ English ▾ Paragraph ▾ ≡ ▾ ≡ ▾

✓ C

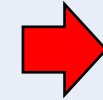
Let's Learn English Grammar!

Enter your
'Lesson Description'

How to Add Fill-in-the-Blanks

5

After you have completed your Introduction Page, scroll up and click the **SAVE** button



Lesson Title

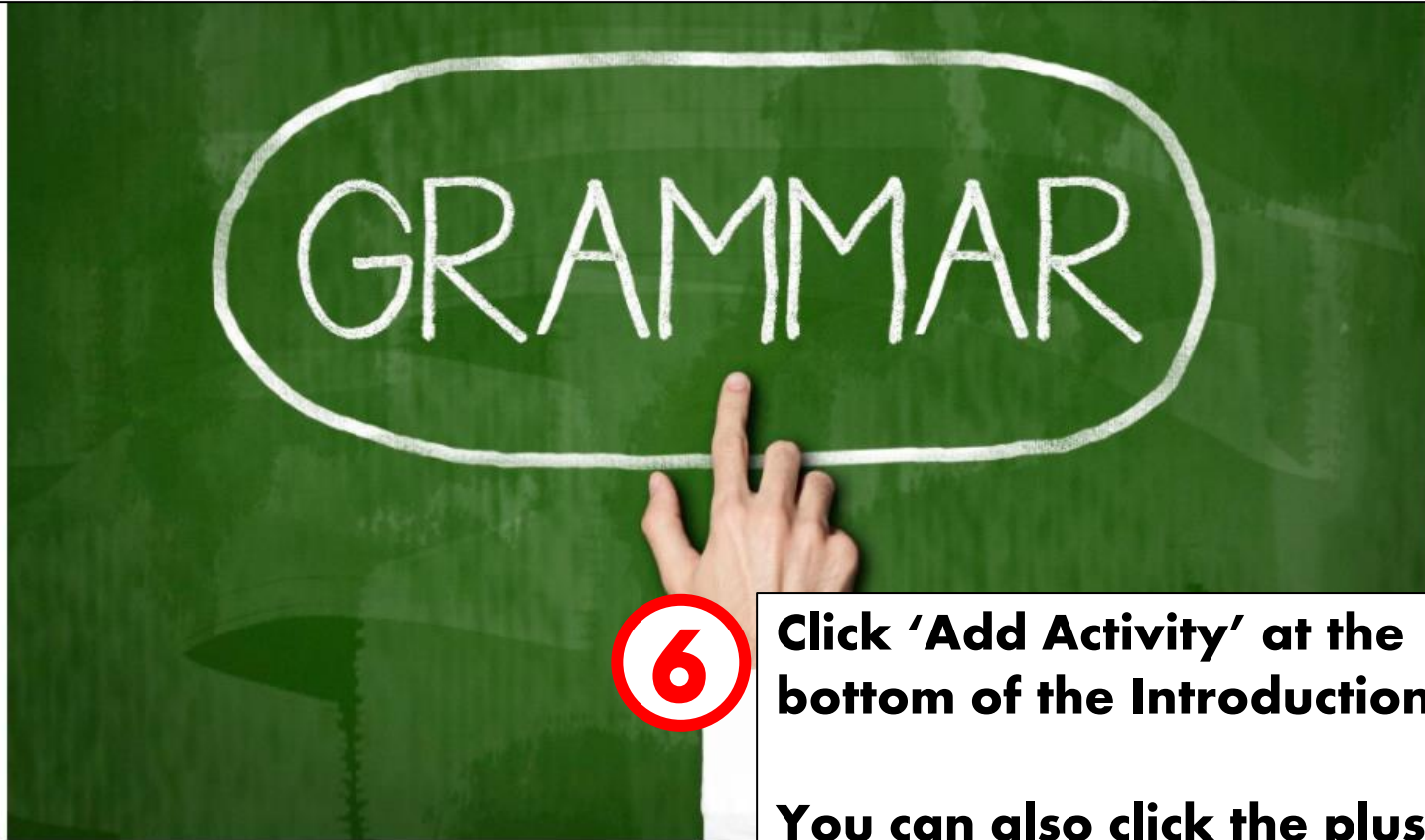
English Grammar

Featured Image

Please refer to the list of acceptable file types and sizes [here](#).

+ ADD EXISTING ▾

How to Add Fill-in-the-Blanks

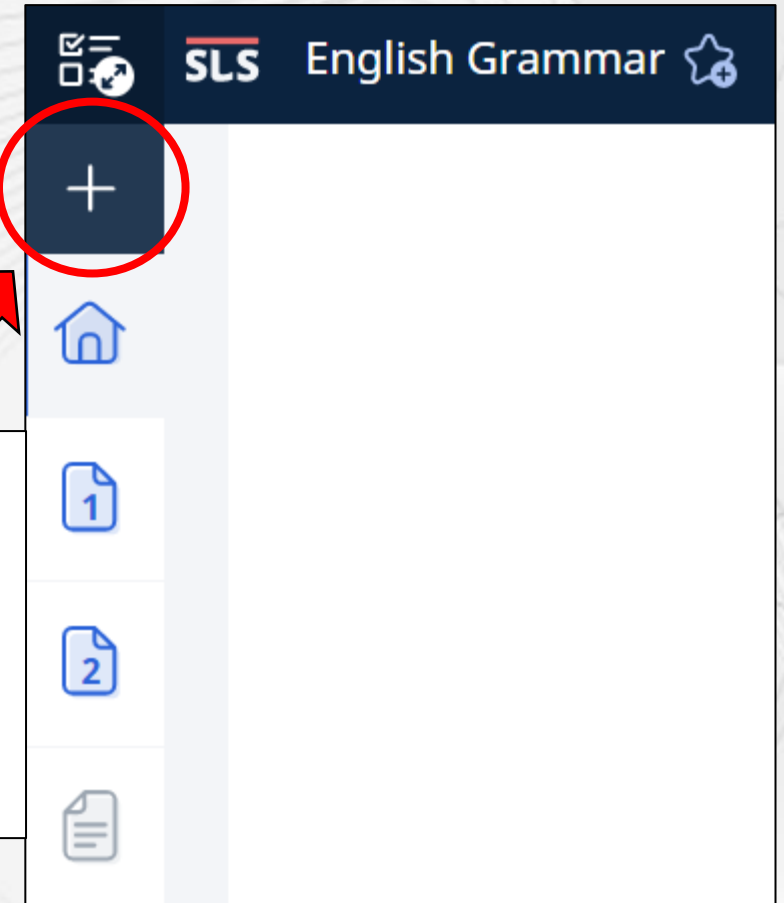
**6**

Click 'Add Activity' at the bottom of the Introduction Page.

You can also click the plus sign to add new activity page.

Let's Learn English Grammar!

+ ADD ACTIVITY




How to Add Fill-in-the-Blanks

EL Reading Comprehension (Job Des... / Add New Activity) + ADD EXISTING ×


Add New Activity

Custom




Custom Activity
Create an activity with stand-alone components without quiz monitoring functions.

CHOOSE




Progressive Quiz
Students will receive feedback automatically after submitting each question.

CHOOSE



Auto-Graded Quiz
Students will receive feedback automatically after submitting the entire quiz.

CHOOSE



Teacher-Marked Quiz
Students will receive feedback after teachers have marked and released the quiz.

CHOOSE

What is Progressive Quiz?
Students will receive feedback automatically after submitting each question.

7

Choose 'Progressive Quiz'

How to Add Fill-in-the-Blanks

Quiz Title

Grammar Quiz 2: Fill-in-the-Blanks



Quiz Mode

Progressive Quiz

11

To start creating your Fill-in-the-Blanks, click the plus-sign



8

Type your Quiz Title in the box

Description

9

Type a description of your quiz in the box (Optional)

Instruction to students

Fill in the blanks with the word given.

10

Type instructions to your students in the box (Optional)

How to Add Fill-in-the-Blanks

12

You can choose our Question type here.

Since we are creating Fill-in-the-Blanks in our quiz, select Fill-in-the-Blanks.

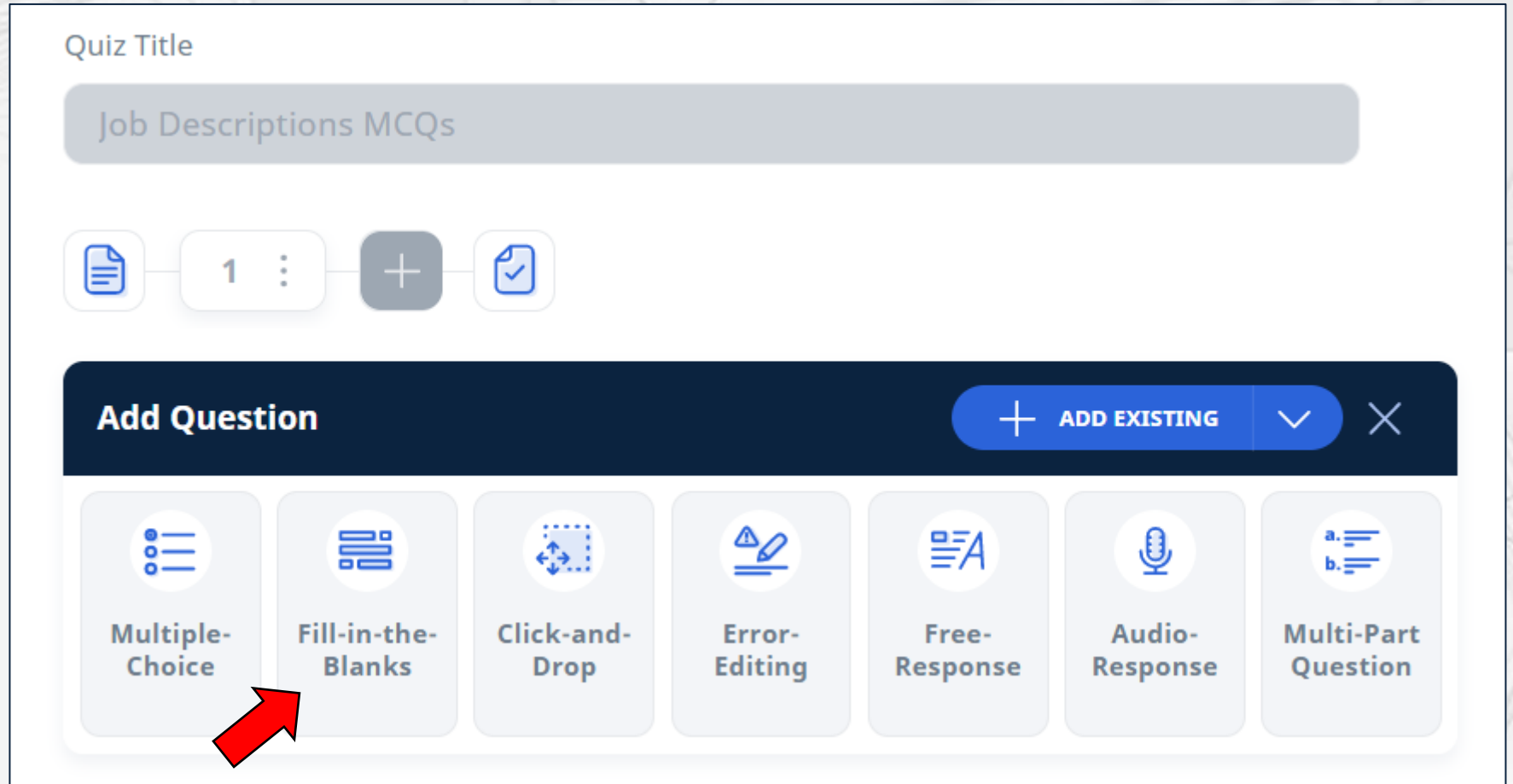
Quiz Title

Job Descriptions MCQs

1 +

Add Question + ADD EXISTING ✓ ✕

- Multiple-Choice
- Fill-in-the-Blanks**
- Click-and-Drop
- Error-Editing
- Free-Response
- Audio-Response
- Multi-Part Question

A screenshot of a quiz creation interface. At the top, there is a 'Quiz Title' field containing 'Job Descriptions MCQs'. Below this is a control bar with a document icon, the number '1', a plus sign, and a checkmark icon. A dark blue 'Add Question' button is prominent, with a sub-menu containing '+ ADD EXISTING', a dropdown arrow, and a close 'X' icon. Below the button is a row of seven question type options, each with an icon and text: 'Multiple-Choice', 'Fill-in-the-Blanks', 'Click-and-Drop', 'Error-Editing', 'Free-Response', 'Audio-Response', and 'Multi-Part Question'. A red arrow points to the 'Fill-in-the-Blanks' option.

How to Add Fill-in-the-Blanks

13

Type the question or sentence in the question body.

Click 'ADD BLANK'
This is where your student will key-in their answer.

Question Body ⓘ

Add Blank ↶ ↷ B I A ▾ ✎ ▾ ≡ ▾ English ▾ Paragraph ▾

☰ ▾ ☰ ▾ ✓ C

📅 ▾ 📄 😊 📎 ▾ 🎨 ▾ 📺 🔗 </> 💬 👤

is	have	has	are	am
----	------	-----	-----	----

1. Siti (1) four big books.

2. I (2) a tall boy.

3. Adam (3) a soccer player.

4. Mr Teo and Ms Wong (4) teachers.

How to Add Fill-in-the-Blanks

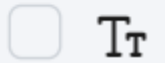
14

Scroll down and key-in the answer into the Acceptable Answer box and press Enter on your keyboard.

You can key-in more than one answer.

Answer 1

has ×

**15**

Click the 'SAVE' icon at the top right of the question body.



**End of Tutorial
Thank you!**

